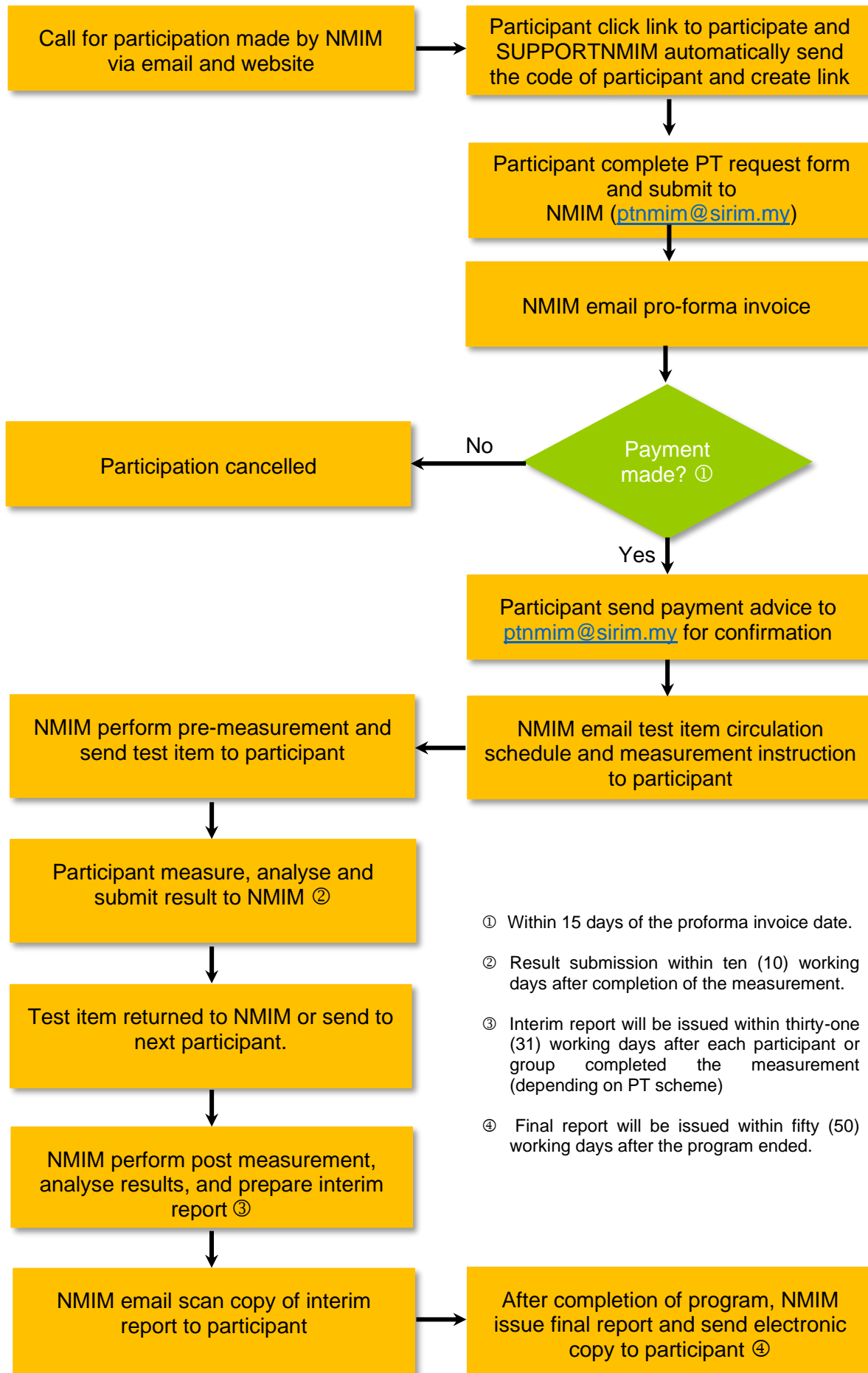


# Flowchart: Participation in NMIM Proficiency Testing (PT) Program



① Within 15 days of the proforma invoice date.

② Result submission within ten (10) working days after completion of the measurement.

③ Interim report will be issued within thirty-one (31) working days after each participant or group completed the measurement (depending on PT scheme)

④ Final report will be issued within fifty (50) working days after the program ended.